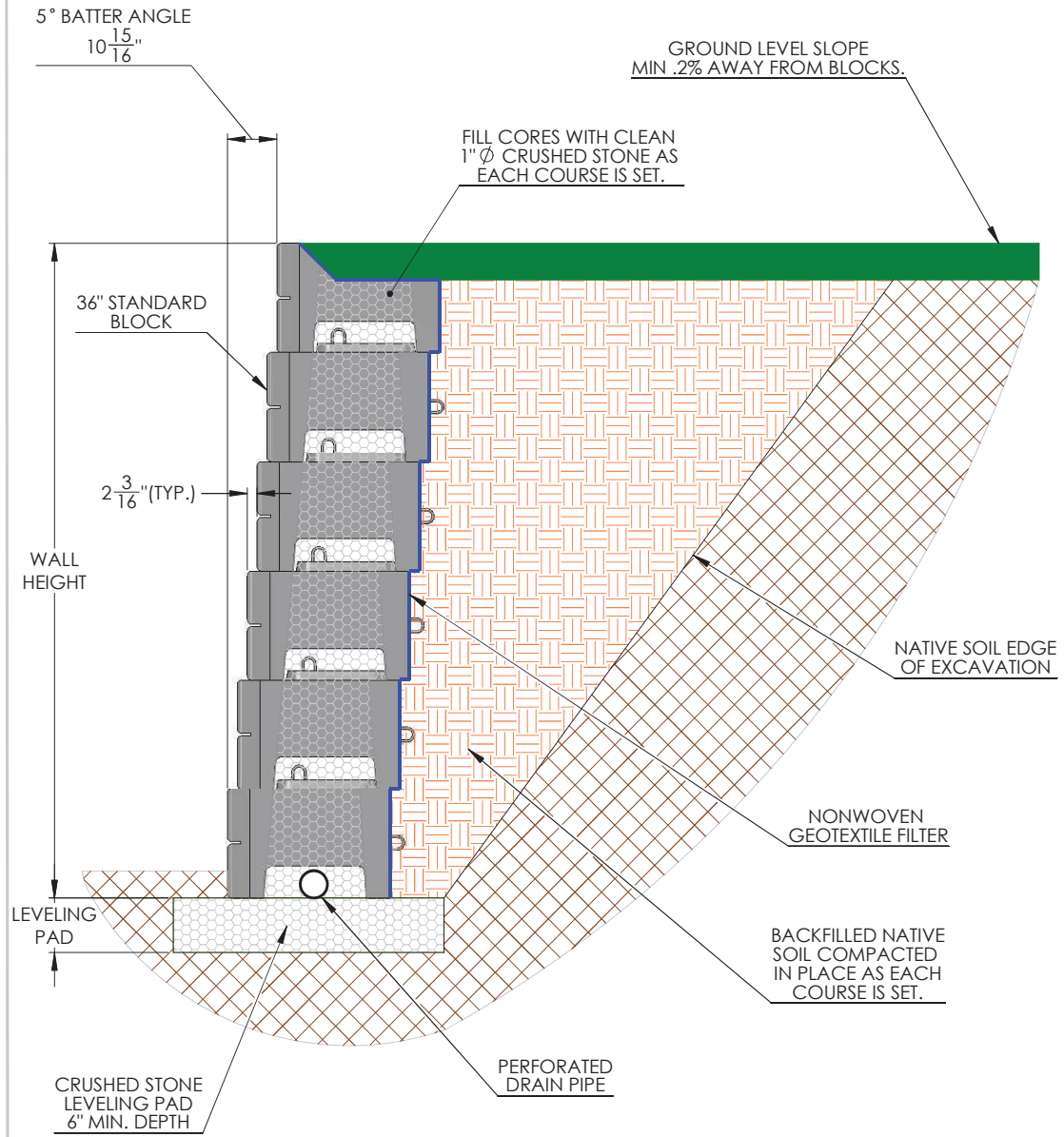


## TYPICAL GRAVITY WALL WITH 36" VERTI-BLOCK



DRAWN BY	DATE	TITLE:
DAN BALLING	12/30/2013	12' RETAINING SECTION
16500 SOUTH 500 WEST BLUFFDALE, UTAH 84065 PHONE: (801) 571-2028		DWG NO.
		WD-14
SCALE: 1: 30		SHEET 1 OF 1